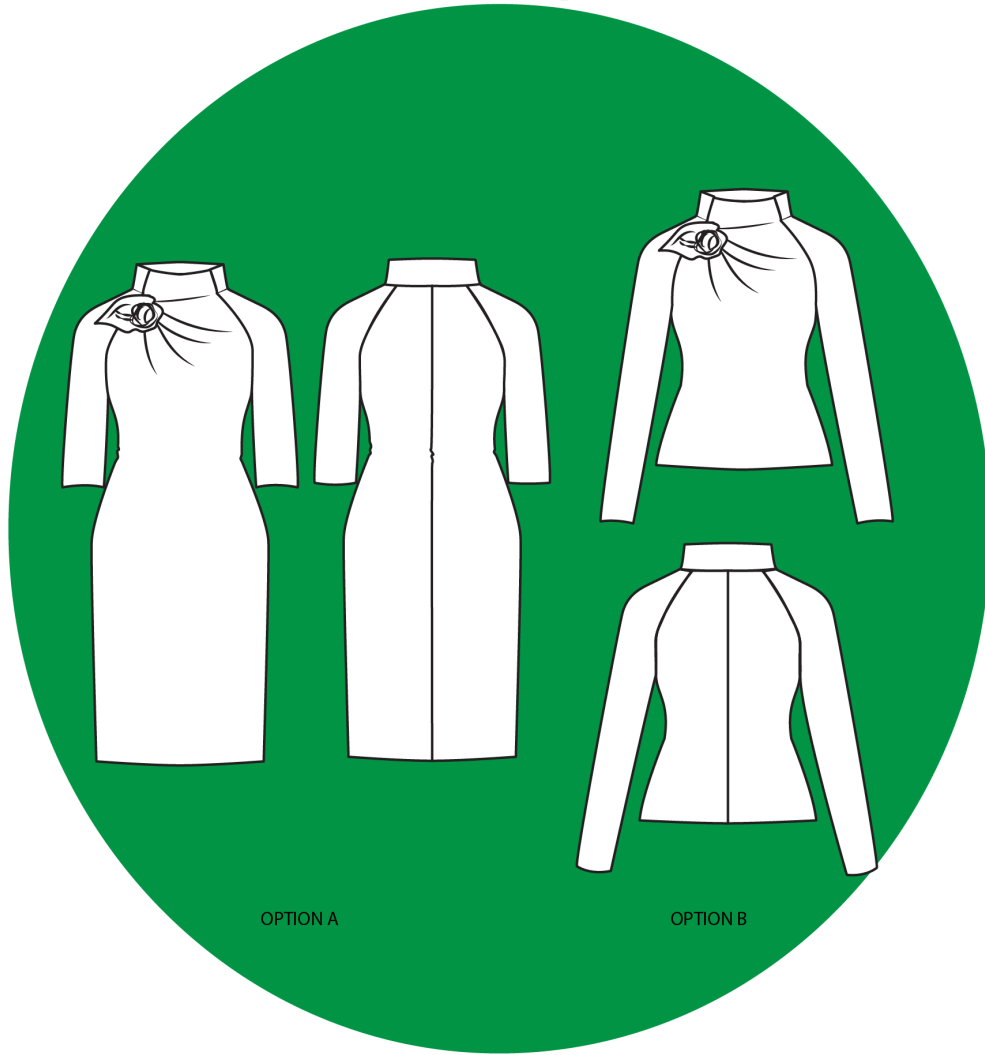


*SewExplicit*  
patterns



OPTION A

OPTION B

RENIKEJI

STYLE 2002

SIZES 6-22

SKILL LEVEL ●●○○○

[www.sewexplicitpatterns.com](http://www.sewexplicitpatterns.com)

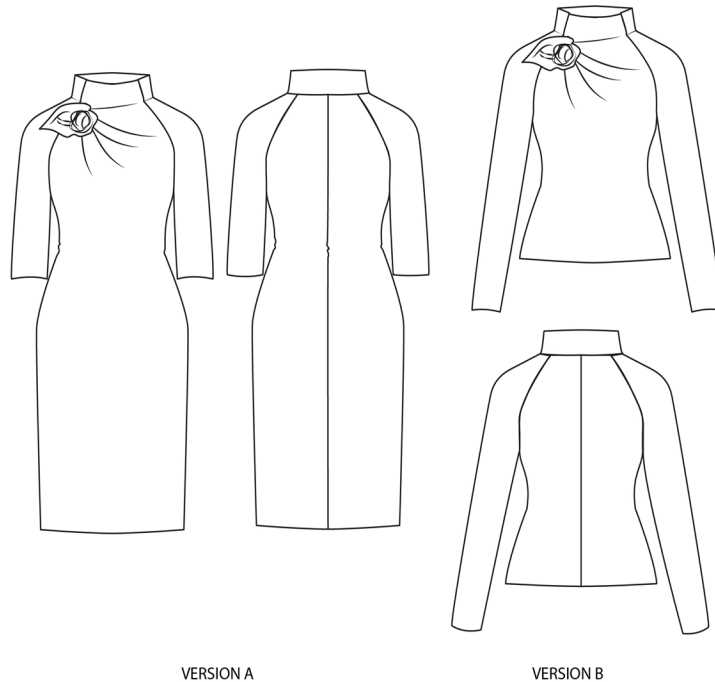
# About Renikeji

**R**enikeji is an elegant style which comes in top and gown lengths with two sleeve length option. A close fitting dress featuring raglan sleeves, funnel neck, and asymmetric drapes that converge to form a grown-on corsage. A versatile dress/top that can be worn casually or dressed up for an elegant evening dress look.

Making-up *Renikeji* requiring no zip or signed for knits. The very close fit (think fit is preferred, one

The gown version is top just hits the hip tion skims the wrist is just a few inches

The corsage which is right shoulder, is ed drape and tied in form an interesting sion and the front facing is cut in one er and inner collar one to eliminate seam bulk.



is easier than it looks, fastening as it is de-style is designed as a bodycon) but if a loser can go a size higher.

knee length while the line. The long sleeve op-while the shorter sleeve below the elbow.

designed to be on the formed from the extend-no particular way to shape. The drape exten-neck are self-faced (i.e. with the body). The out-pieces are also cut-in-

Since the design is asymmetric, care should be taken in lying out the fabric and pattern pieces. Also, in laying the fabric, the more stretchy direction of the fabric is put across the girth (width) of the body.

## Suggested Fabric

Stable dress weight knits with enough horizontal stretch (i.e. from selvedge to selvedge) to wear without zip/fasteners– Jersey etc.

## Supplies

- ◆ Main fabric
- ◆ Matching thread
- ◆ Knit fusible interfacing

# Measurements

## Body Measurements Chart (inches)

Size	6	8	10	12	14	16	18	20
Bust	32	34	36	38	40	42	44	46
Waist	26	28	30	32	34	36	38	40
Hip	34	36	38	40	42	44	46	48

## Apprx. Finished Garment Dimensions (inches)

Size	6	8	10	12	14	16	18	20
Bust	33.5	35.5	37.5	39.5	41.5	43.5	45.5	47.5
Waist	26	28	30	32	34	36	38	40
Hip	34	36	38	40	42	44	46	48

## Main Fabric of width 54-60" Required (Yards)

	6	8	10	12	14	16	18	20
Option A	2	2	2	2	2	2	2 1/4	2 1/4
Option B	1 1/2	1 1/2	1 1/2	1 3/4	1 3/4	1 3/4	2	2

## Body Measurements Chart (cm)

Size	6	8	10	12	14	16	18	20
Bust	81.3	86.4	91.4	96.5	101.6	106.7	111.8	116.8
Waist	66.0	71.1	76.2	81.3	86.4	91.4	96.5	101.6
Hip	86.4	91.4	96.5	101.6	106.7	111.8	116.8	121.9

## Approximate Finished Garment Dimensions (cm)

Size	6	8	10	12	14	16	18	20
Bust	85.1	90.2	95.3	100.3	105.4	110.5	115.6	120.7
Waist	66.0	71.1	76.2	81.3	86.4	91.4	96.5	101.6
Hip	86.4	91.4	96.5	101.6	106.7	111.8	116.8	121.9

## Main Fabric of width 135-150cm Required (Metres)

	6	8	10	12	14	16	18	20
Option A	1.82	1.82	1.82	1.82	1.82	1.82	2.05	2.05
Option B	1.37	1.37	1.37	1.59	1.59	1.59	1.82	1.82

\* Estimated yardage is for non-directional fabrics.

NOTE: this pattern is drafted using the imperial system (inches), all conversions to metric are approximates.

## 10. Attach the Collar

The collar attaches to the back neck and the V-like shaped sleeve top.

With outer collar (the half you fused) facing the RS of back body, align the raw edges of the folded collar, matching 18 to the centre back seam.

*Butterfly (i.e. open flat) all already sewn seams to reduce the new seam bulk*

sew with 3/8" allowance, stretching the V-like cut of the top of sleeve to straighten it to match the collar (note— it can't be totally straight).

