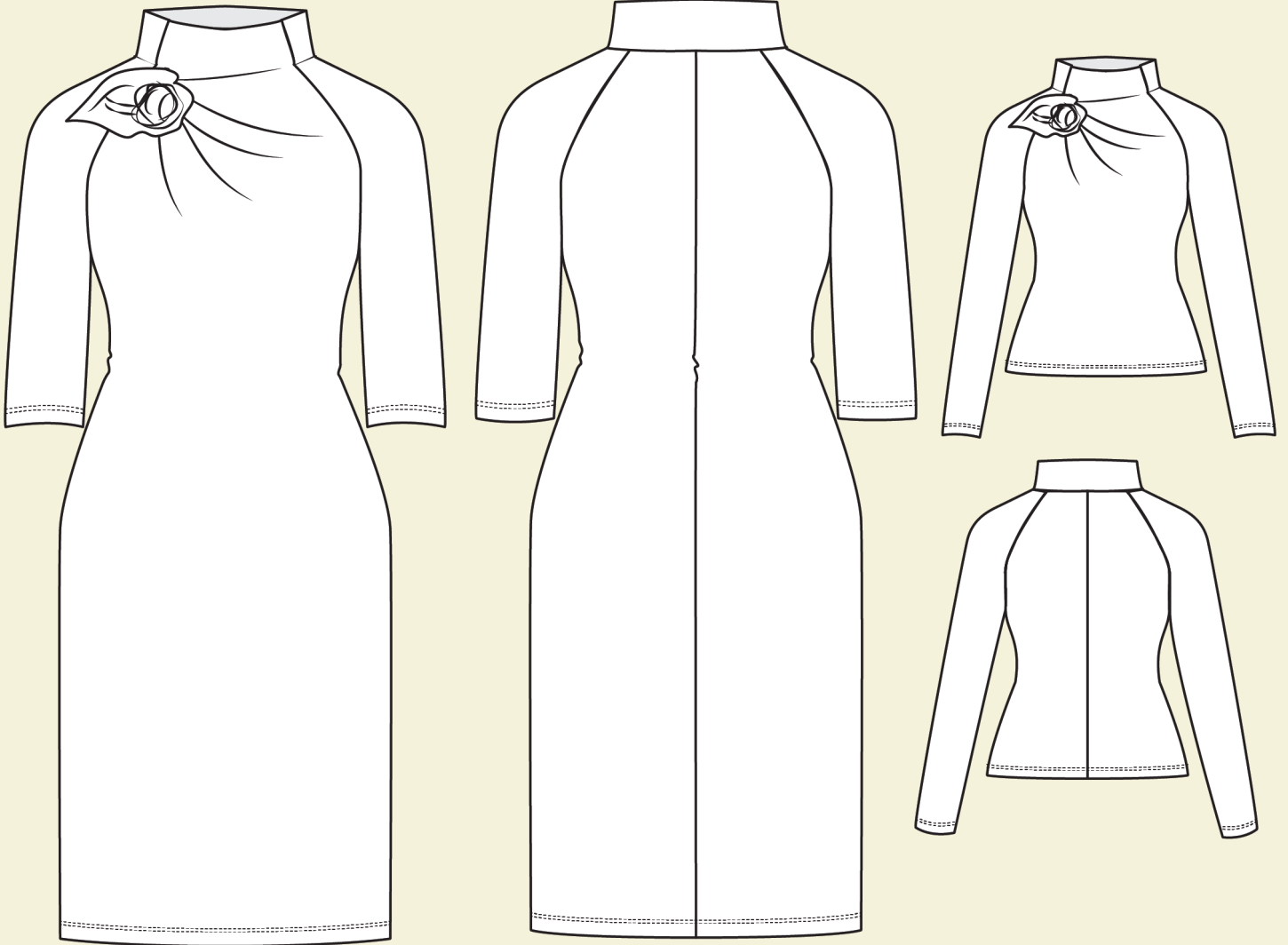




EASY & MAKE

By SewExplicit Patterns



Renikeji

STYLE 2002

SIZES 6-22

sewexplicitpatterns.com

COPYRIGHT POLICY/TERMS AND CONDITIONS

This sewing pattern, along with the instruction set is designed and made by SewExplicit Patterns. It is subject to Copyright and is for personal use only. The content herein may not be reproduced, transmitted or shared in any form or by any means- mechanical, electronic, photocopying or otherwise without prior consent of SewExplicit Patterns.

While you are free to sell any number of garments made from this sewing pattern, you cannot transfer or pass on this pattern to your tailors, production staff or other parties. All items must be handmade by you. Our patterns are not licensed for mass production.

By downloading this pattern, whether purchased or free, you have agreed to the terms and conditions.

FIRST PUBLISHED 2016

REVISED 2026

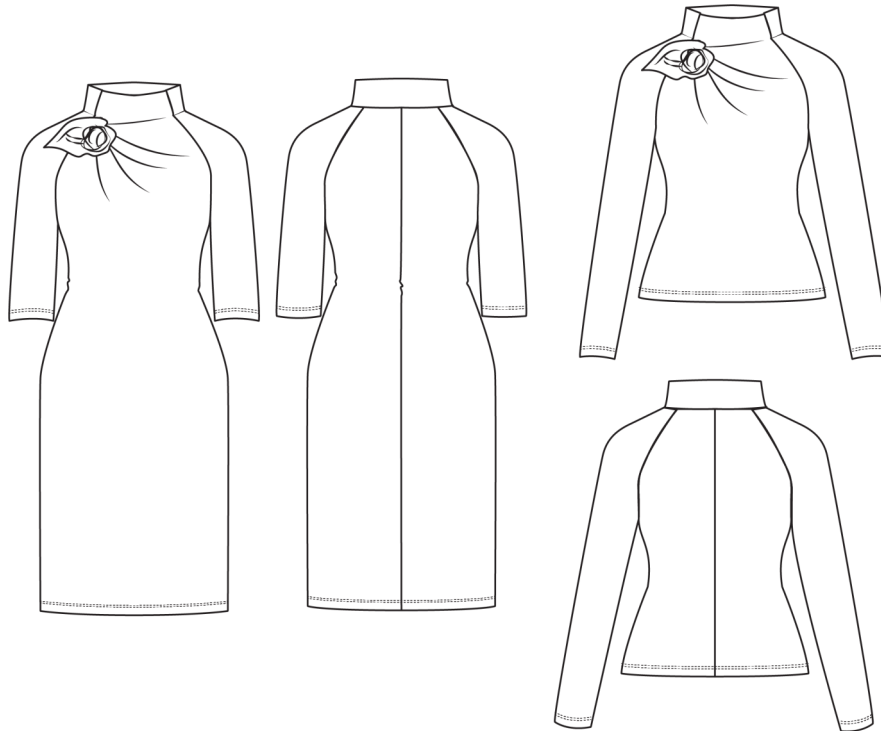
<https://sewexplicitpatterns.com>

About Renikeji

Renikeji is an elegant design that comes in two lengths: a knee-length dress and a top that skims the hip. It features raglan sleeves, a funnel neck, and asymmetric drapes that converge to form a grown-on corsage.

Renikeji is designed to be easier to sew than it looks—no zip or fasteners are required. It also includes two options: a long sleeve that skims the wrist, and a shorter sleeve that ends a few inches below the elbow.

The corsage, designed to sit on the right shoulder, is created from the excess fabric of the bodice and can be tied in any way you like to form an interesting sculptural drape extension and shape. The front neckline is self-faced (the facing is cut in one with the body) and the outer and inner collar pieces are also cut in one to reduce seam bulk.



signed for knits and than it looks—no tening is required. It two sleeve length sleeve that skims the shorter sleeve that inches below the

designed to sit on shoulder, is created tended drape and any way you like to esting sculptural drape extension and are self-faced (the one with the body),

A versatile dress/top that can be worn casually or dressed up for an elegant evening look.

Suggested Fabric

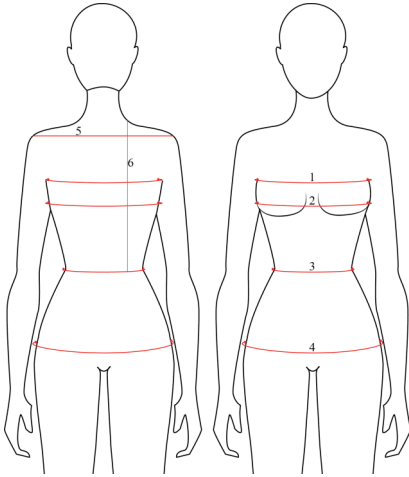
This pattern is best suited for **stable to moderate-stretch, medium-weight knit fabrics**. Choose fabrics with enough stretch to wear without a zipper/fastening— a maximum of **30% crosswise stretch** is recommended, a knit fabric that has some drape but is not slinky.

Supplies

- ◆ Jersey/Stretch needle
- ◆ Thread to match
- ◆ Knit fusible interfacing

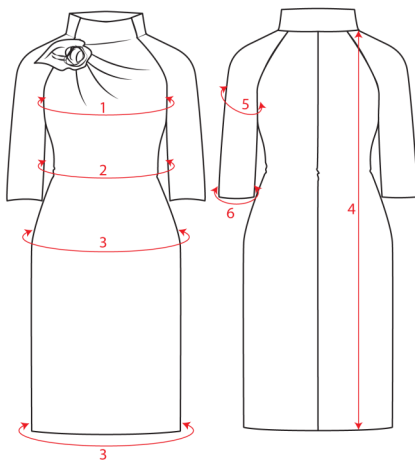
Measurements (Imperial)

Body Measurements Chart (inches)



Size	6	8	10	12	14	16	18	20	22
1.Chest/Upper Bust	30	32	34	36	38	40	42	44	46
2.Full Bust (B-cup)	32	34	36	38	40	42	44	46	48
3.Waist	26	28	30	32	34	36	38	40	42
4.Hip	35	37	39	41	43	45	47	49	51
5.Across Shoulder	14	14 ¹ / ₂	15	15 ¹ / ₂	16	16 ¹ / ₂	17	17 ¹ / ₂	18
6.Back length	16	16 ¹ / ₄	16 ¹ / ₂	16 ³ / ₄	17	17 ¹ / ₄	17 ¹ / ₂	17 ³ / ₄	18
7.Height	65"- 68"	65"- 68"	65"- 68"	65"- 68"	65"- 68"	65"- 68"	65"- 68"	65"- 68"	65"- 68"

Approximate Finished Garment Dimensions (inches)



Siz	6	8	10	12	14	16	18	20	22
1.BUST CIRCF.	34.1	36.1	38.1	40.1	42.1	44.1	46.1	48.1	50.1
2.WAIST CIRCF.	26.4	28.4	30.4	32.4	34.4	36.4	38.4	40.4	42.4
3.HIP/HEM CIRCF.	36.0	38.0	40.0	42.0	44.0	46.0	48.0	50.0	52.0
4a. DRESS LENGHT	39.9	40.3	40.6	41.0	41.4	41.7	42.1	42.5	42.8
4b. TOP LENGHT	23.8	24.1	24.5	24.9	25.2	25.6	26.0	26.3	26.7
5.BICEP CIRCF.	12.4	12.9	13.4	13.9	14.4	14.9	15.4	15.9	16.4
6a. LONG SLEEVE	7.7	7.9	8.2	8.4	8.7	8.9	9.2	9.4	9.7
6b. 3/4 LENGTH	9.9	10.2	10.4	10.7	10.9	11.2	11.4	11.7	11.9

Estimated Fabric Required (Yards)

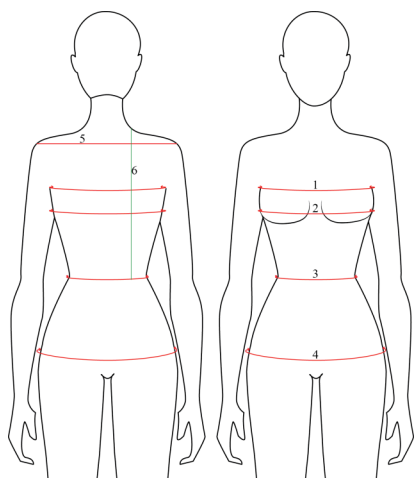
54" wide Fabric	6	8	10	12	14	16	18	20	22
Option A	2	2	2	2	2	2	2 ¹ / ₄	2 ¹ / ₄	2 ¹ / ₄
Option B	1 ¹ / ₂	1 ¹ / ₂	1 ¹ / ₂	1 ³ / ₄	1 ³ / ₄	1 ³ / ₄	2	2	2

NOTE: The estimate is based on non-directional fabrics i.e. fabrics without nap and obvious design direction. Allow for more fabric when using one-way, napped, striped fabrics and fabrics with narrower widths. Also, since the design is asymmetric, care should be taken in laying out the fabric and pattern pieces in the correct direction. The suggested cutting layouts are on [page 10](#).

NOTE: this pattern is drafted using the imperial system (inches), all conversions to metric are approximates.

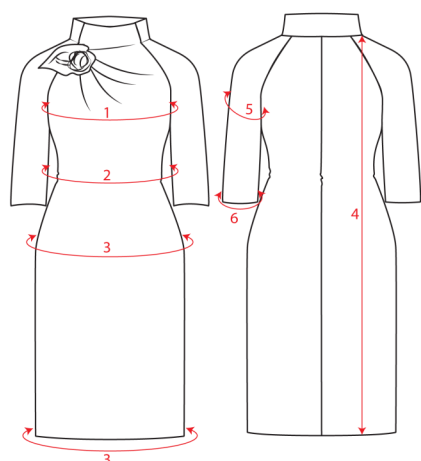
Measurements (Metric)

Body Measurements Chart (cm)



Siz	6	8	10	12	14	16	18	20	22
1.Chest/Upper Bust	76.2	81.3	86.4	91.4	96.5	101.6	106.7	111.8	116.8
2.Full Bust (B-cup)	81.3	86.4	91.4	96.5	101.6	106.7	111.8	116.8	121.9
3.Waist	66.0	71.1	76.2	81.3	86.4	91.4	96.5	101.6	106.7
4.Hip	88.9	94.0	99.1	104.1	109.2	114.3	119.4	124.5	129.5
5.Across Shoulder	35.6	36.8	38.1	39.4	40.6	41.9	43.2	44.5	45.7
6.Back length	40.6	41.3	41.9	42.5	43.2	43.8	44.5	45.1	45.7
7.Height	165-172	165-172	165-172	165-172	165-172	165-172	165-172	165-172	165-172

Approximate Finished Garment Dimensions (cm)



Siz	6	8	10	12	14	16	18	20	22
1.BUST CIRCF.	86.6	91.7	96.8	101.9	107.0	112.0	117.1	122.2	127.3
2.WAIST CIRCF.	67.0	72.1	77.2	82.3	87.4	92.4	97.5	102.6	107.7
3.HIP/HEM CIRCF.	91.4	96.5	101.6	106.7	111.8	116.8	121.9	127.0	132.1
4a. DRESS LENGHT	101.3	102.2	103.2	104.1	105.1	106.0	106.9	107.9	108.8
4b. TOP LENGHT	60.3	61.3	62.2	63.1	64.1	65.0	66.0	66.9	67.8
5.BICEP CIRCF.	31.4	32.7	34.0	35.3	36.5	37.8	39.1	40.3	41.6
6a. LONG SLEEVE	19.5	20.1	20.8	21.4	22.0	22.7	23.3	24.0	24.6
6b. 3/4 LENGTH SLV. CUFF	25.2	25.9	26.5	27.1	27.8	28.4	29.0	29.7	30.3

Estimated Fabric Required (Meters)

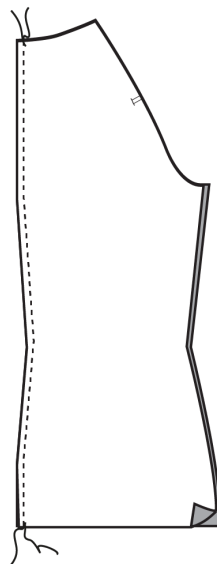
137 cm wide Fabric	6	8	10	12	14	16	18	20	22
View A	1.82	1.82	1.82	1.82	1.82	1.82	2.05	2.05	2.05
View B	1.37	1.37	1.37	1.59	1.59	1.59	1.82	1.82	1.82

NOTE: The estimate is based on non-directional fabrics i.e. fabrics without nap and obvious design direction. Allow for more fabric when using one-way, napped, striped fabrics and fabrics with narrower widths. Also, since the design is asymmetric, care should be taken in laying out the fabric and pattern pieces in the correct direction. The suggested cutting layouts are on [page 10](#).

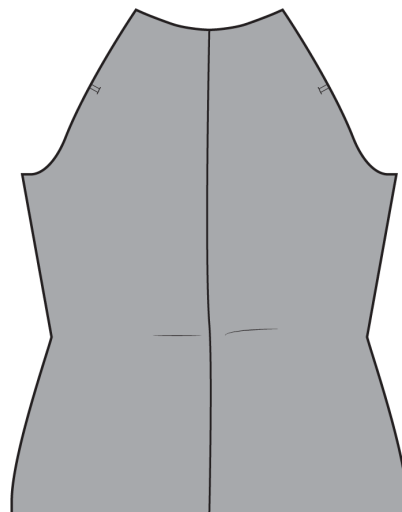
NOTE: this pattern is drafted using the imperial system (inches), all conversions to metric are approximates.

6. Join the Centre Back seam

- With right sides facing each other, join the back pieces on the centre back. Seam allowance is $3/8''$ (1 cm).



- After joining



7. Join the Side Seams

- Align the front and back at the side seams and sew down both left and right sides with a seam allowance of $3/8''$ (1 cm).

